



For April and May, we have been posting daily vehicle photos on Facebook, all from our collections. The most popular was this great shot of Barrow Corporation Leyland National 2 20 (CEO 720W) which just gleams with municipal pride. It was new in 1980 and passed to the Barrow “arms length” company in 1986, and then to Stagecoach Ribble when the Barrow business closed in 1989. Today, it is preserved. (Photographer Roy Marshall, copyright The Bus Archive, ref RM02/M1B23). For more highlights of our Facebook flood, see page 10.

IN THIS **16 PAGE LOCKDOWN SPECIAL** ISSUE

“The Windscreen Wiper”
Rowland Pittard
Midland Red on the Motorway
Facebook Flood

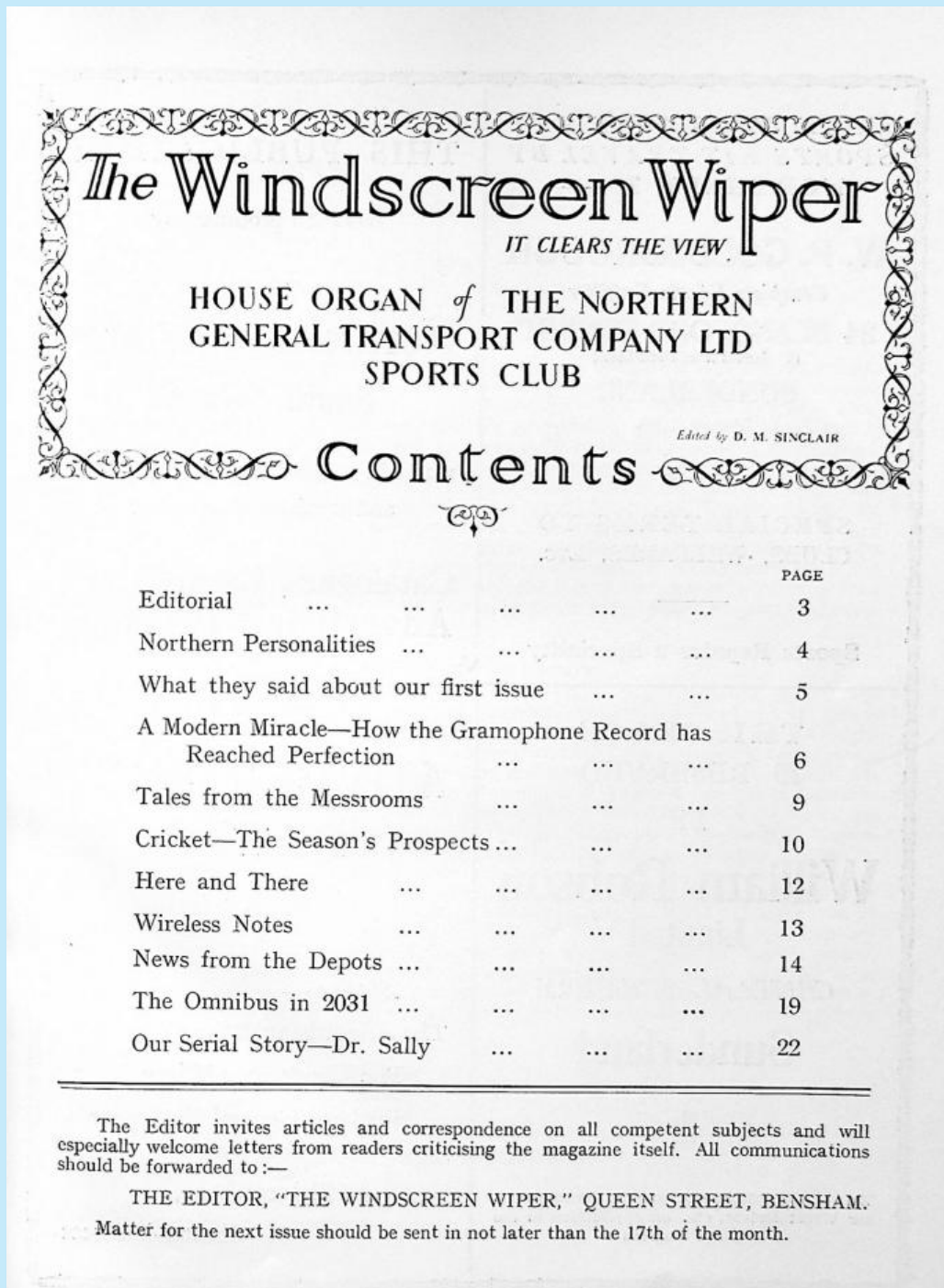
Traffic Areas
More digitisation
How to Support us
Odds and Ends

The Future according to “The Windscreen Wiper”

We have a run of this publication (actually bound volumes) which was subtitled “House Organ of the Northern General Transport Company Ltd Sports Club”. It is a high quality publication and for much of its content it is focused on non-bus happenings, such as whist drives at Stanley depot, but it also has book reviews and even a short story by P G Wodehouse.

What sets it apart, however is its editor – D M Sinclair, at that time (1932) Assistant Chief Engineer at Northern but later to be a highly successful and innovatory Chief Engineer and eventually General Manager with Midland Red (Birmingham and Midland Motor Omnibus Co).

The edition from June 1932 includes a feature on “The Omnibus in 2031” and it is interesting how many of the predictions have come true – or nearly. Hybrid diesel/electric propulsion was prophesied, but we aren’t sure about steam propulsion. And speeds of 40 mph in urban areas remain a dream.



The Windscreen Wiper
IT CLEARS THE VIEW

HOUSE ORGAN of THE NORTHERN
GENERAL TRANSPORT COMPANY LTD
SPORTS CLUB

Edited by D. M. SINCLAIR

Contents

	PAGE
Editorial	3
Northern Personalities	4
What they said about our first issue	5
A Modern Miracle—How the Gramophone Record has Reached Perfection	6
Tales from the Messrooms	9
Cricket—The Season’s Prospects	10
Here and There	12
Wireless Notes	13
News from the Depots	14
The Omnibus in 2031	19
Our Serial Story—Dr. Sally	22

The Editor invites articles and correspondence on all competent subjects and will especially welcome letters from readers criticising the magazine itself. All communications should be forwarded to :—

THE EDITOR, “THE WINDSCREEN WIPER,” QUEEN STREET, BENSHAM.

Matter for the next issue should be sent in not later than the 17th of the month.

The Omnibus in 2031

(With acknowledgements to the T.O.T. Magazine)

In an age of uncertainty and contradiction it is pleasant to have discovered a theme upon which no living soul can be certain; to make statements which none may contradict. So having described the Tramways in 2031 in the May issue, we probed the bus people.

We went to the young men with ideas and asked them questions. Their replies are summarised below. If your opinions differ we shall be glad to know.

Will the Bus Alter Materially in Design?

IT is doubtful whether the actual overall dimensions will be increased much. The width may be increased to give absolute comfort when seating four abreast and the space at present occupied by the engine will be utilized for passenger accommodation.



The design of the vehicle as a whole will undergo radical changes. Much more attention will be paid to aerodynamic design. The drag coefficient of to-day's box-type body is extremely high, and wind resistance absorbs about 50 per cent. of the power developed by the engine at a road speed of, say, 40 miles per hour. As the tendency is towards higher speeds the vehicles will have to be designed as streamline bodies with the lowest possible coefficient of drag.

The orthodox chassis frame of to-day will be replaced by a scientifically designed and stressed structure. The body and chassis will merge into one light alloy structure in which every member is doing useful work in sustaining the load in the

vehicle. In this way the weight will seem absurdly light when compared with the practise existing to-day.

Is the Elevated Railway System Ever Likely to Come to Newcastle?

There would appear to be no reason why in wide, well-designed streets the central portion should not carry a double track elevated roadway with footbridges springing therefrom to the street side walks at suitable intervals, the whole being carried out in steel, concrete and stone, conforming with the architectural taste of the period.

Tell Us Something About "Northern" Buses in the Air, Flying Stations, Elevators, and so on.

The distribution of Newcastle public transport a hundred years hence as between air and ground would seem to depend largely on the manner in which Newcastle itself develops and also upon the social regime then prevailing. One is led to visualise aerial buses from outlying parts to central air stations towards the centre of the city, connecting with road services in the City itself.

The picking up and setting down function of the road bus are so essential a feature of its convenience, that it seems unlikely that they would be abolished in favour of fixed stations inside the City.

It would appear certain that Newcastle will have to be adapted to traffic requirements, indeed, signs of it doing so are already apparent. With added ease of transport by connected air and road services, it is likely that the surrounding residential areas will thin out, giving the central parts more elbow

room for a sensible lay-out to allow for traffic requirements.

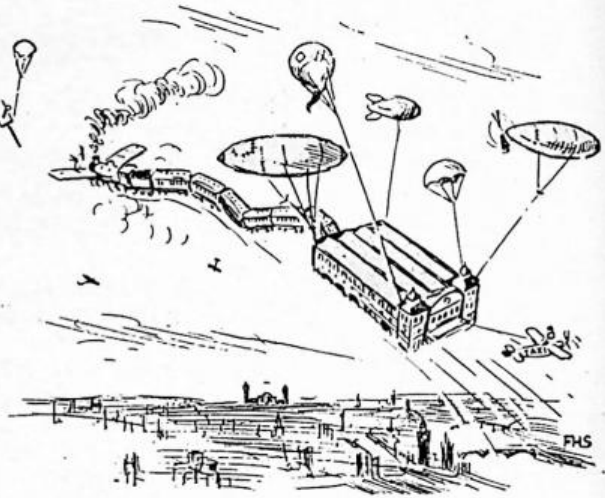
Will there be Fly-overs and Fly-unders at Cross-roads in 2031?

This idea has already arrived. An illustration of the lay-out which it is proposed to build in the United States has already appeared in various papers. This cross-road lay-out provides a complete inter-connection without any obstruction to traffic in any of four possible directions, provided the rule of the road is adhered to. The crossings, however require very large areas for their accommodation,

What Power will be used, and What will be the Method of Transmission?

It is certain that the orthodox gear-box and back-axle of to-day will be replaced by some form of infinitely variable gear. The electric drive will probably return for the actual transmission to the road wheels, the prime mover being a constant high-speed engine of light weight, driving a highly efficient and flexible generator. The thermal-efficiency of the engine will be high.

It is probable that there might be a reversion to steam, but if an I.C. engine is utilised it will undoubtedly be a compression-ignition engine from consideration of thermal-efficiency. It will be very compact and easily placed under the floor. It is certain that some method will be invented for obtaining complete control over the combustion, as this is the big



problem affecting the development of the oil-engine to-day. If individually controllable omnibuses are used for urban traffic with four stops p.m., then the limitations imposed on the rates of acceleration and retardation permissible without undue discomfort to the passengers will limit the maximum speed. 3 m.p.h. per second is probably the limit of acceleration which gives 40 m.p.h. after 13½ seconds, or in 130 yards. The use of lighter fuels will decline and cruder petroleum products will be used. Possibly the fuels of 2031 will be obtained from vegetable or mineral sources.

What Speed will be attained by Buses in 2031?

The maximum retardation for service braking is about 10 miles per hour per second, hence it is possible that speeds of 40 m.p.h. or more could be reached in City traffic with regulated stopping points on zonal roads. For inter-urban services, double-deckers of low construction might be used at speeds of about 70 miles per hour.

How Will the Fares be Collected?

If the present trend of events continues it is probable that local or even contry-wide transport will be included in the individual's contribution to the State, thus abolishing the need for fare collection and fare stages.



Will the Horse be Extinct?

Yes, except at Ascot.



Will There be Garages Below Ground in the Inner Area?

It is possible that there will be some restriction in the use of private motor cars in the

inner area. The day may come when people will be forced to utilise the transport systems which are provided, and the parking problem will thus be reduced.

Will There be Wireless Programmes en Route?

Radio will probably be part of the standard vehicle equipment in 2031, items of news being broadcast as they arrive at a central radio station, the intervals being filled with music, etc.

Well, that was what the young men told us. It makes one feel that it isn't so bad, after all, to be living in 1931, and glad that we cannot be precipitated into the high-speed world of 2031. It must be a gradual process, and no doubt our descendants will be fitted to stand the strain.

Rowland Pittard

Since our last Newsletter, we have learnt of the sad death on 7th April of Rowland Pittard, who bequeathed so much of his collection of railway records and notes to us. Rowland had been in poor health for some time – indeed that was one of the reasons for him donating the material.

This photograph shows Rowland on the occasion of his being awarded Honorary Life Membership of the Railway Correspondence and Travel Society in February, for his 50 years of contribution.

Rowland's final email to us followed our feature in the last edition: "Thank you very much for the latest newsletter, and the feature on my collection. I totally approve."

Erratum: in the last edition, we described one of Rowland's sketches as being of Basle station, when it is in fact of Arth-Goldau.





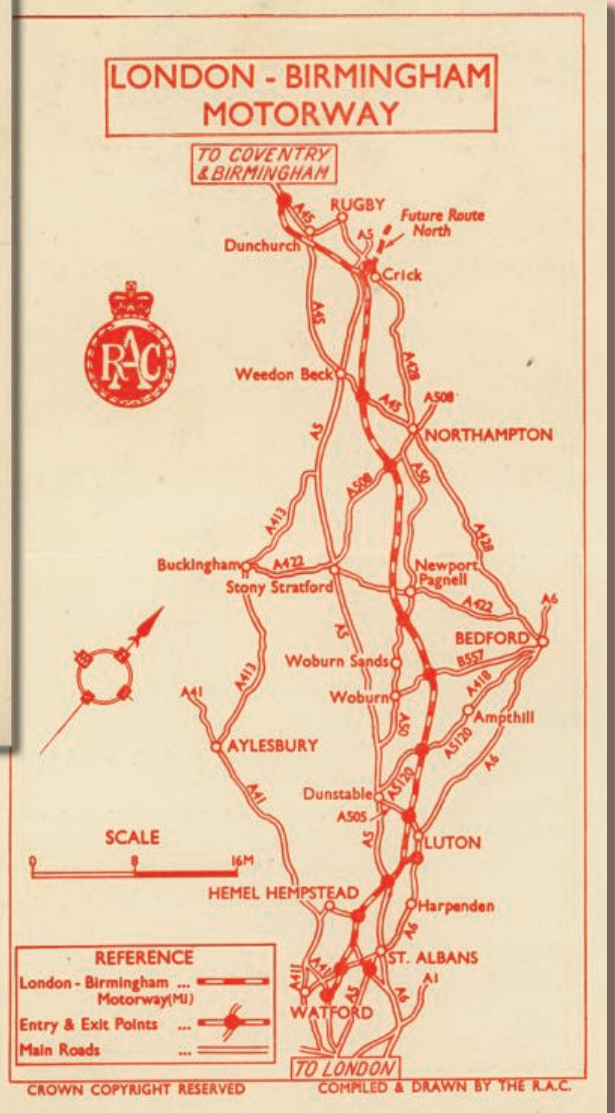
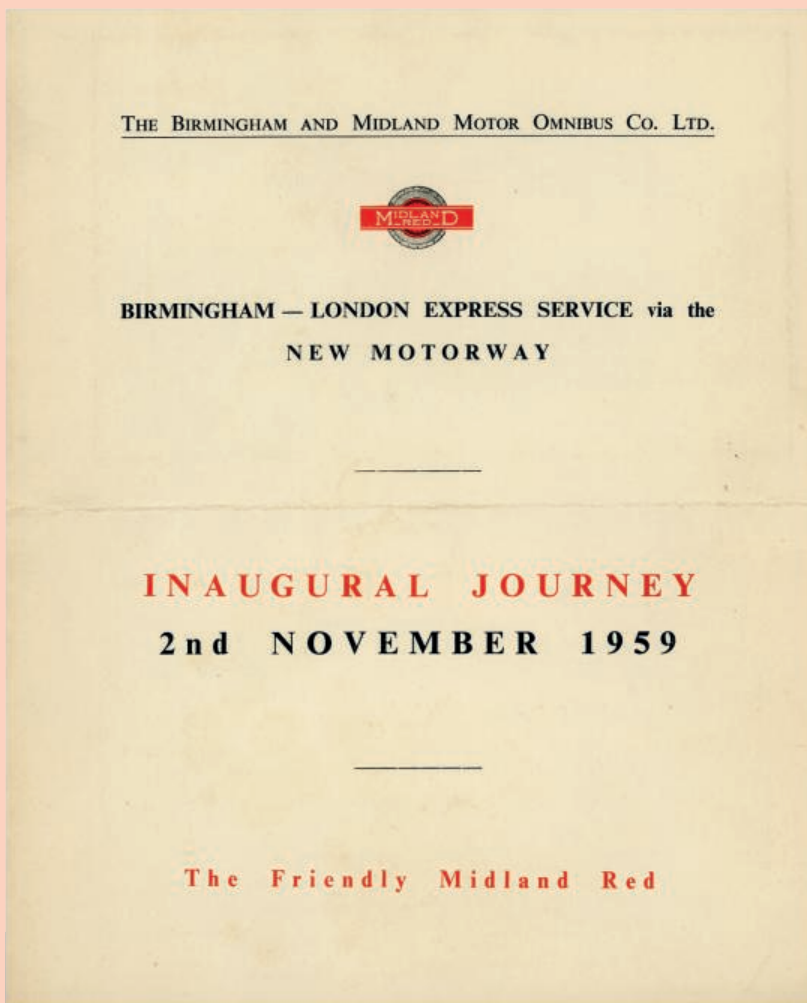
Midland Red on the Motorway



At our Droitwich Centre we have a vast amount of official material (Board Minutes, garage related files, timetables, faretables and official photos) relating to the Birmingham and Midland Motor Omnibus Company (Midland Red). These date back to the company's founding in 1904 and cover many facets of this fascinating, innovative and iconic company.

Perhaps one of the more 'glamorous' episodes was when the company developed a coach specifically for a new Birmingham to London express service via the 'New Motorway' in November 1959. The actual section of the new M1 motorway which was opened at that time was between Crick/Rugby (Junction 18) and Watford (Junction 5).

Here is the brochure produced for the inaugural journey on 2nd November 1959.



AS LONG AGO AS 1st OCTOBER 1958, foreseeing the possibility of a modern fast express service between Birmingham and London via the new Motorway, then under construction, the Company made application for the necessary Road Service Licences, which eventually were granted. Today, 2nd November 1959, with the opening of the Motorway, this new service starts to operate, and daily there will be three journeys in each direction, leaving Birmingham (Digbeth Coach Station) at 8.30 a.m., 2.0 p.m. and 6.30 p.m., and London (Victoria Coach Station) at 9.30 a.m., 1.30 p.m. and 6.30 p.m.

The scheduled journey time on this new service is 3 hours 25 minutes, which is nearly two hours less than that on the Company's existing Birmingham—London services, which, incidentally, were inaugurated in 1930. These existing services, via Daventry and Dunstable, and via Bicester and Aylesbury, will continue to operate, but on the new service passengers will have the advantage of a fast through run at the present attractive fares. If they so desire, they can, therefore, travel one way by the Motorway Express and return by either of the existing services.

The coach chosen for this new service is a modified version of the Company's "C.5" coach, which is designated the "CM.5" coach, and which incorporates a number of features pioneered by the Company, such as disc brakes on all wheels, rubber suspension, and the extensive use of fibre-glass panelling. The engine has been turbo-charged and an overdrive gearbox fitted. These coaches, which are of integral construction, have been built in their entirety at the Company's Central Workshops, at Edgbaston, Birmingham.

For the technically minded, the following is a brief specification of the coach :—

Engine : Type "S.14" K.L. Turbo-charged. Horizontal 6-cylinder in-line diesel, direct injection. Bore 4.45". Stroke 5.25". Capacity 8 litres. Exhaust Turbo-charger fitted. 130 B.H.P. at 1,800 R.P.M. Max Torque 440 lb./ft. at 1,200 R.P.M.

Clutch : Single dry plate clutch, 15 $\frac{7}{8}$ " diameter.

Gearbox : B.M.M.O. DB.5 constant mesh gearbox. Gear ratios 4.968 : 1, 2.74 : 1, 1.617 : 1, Direct and overdrive 0.73 : 1, Reverse 6.429 : 1.

Rear Axle : Fully floating unit with hypoid bevel drive. Ratio 4.44 : 1.

Brakes : Hydraulically operated disc brakes with continuous flow servo assistance, operating on front and rear wheels. Transmission handbrake, disc type.

Suspension : Variable rate rubber suspension front and rear, the front wheels being independently sprung.



Steering : Marles double cam steering box. Ratio 28.5 : 1.

Tyres : Front 9.00 × 20—12-ply. Rear 9.00 × 20—10-ply.

Fuel Tank : 35 gallon capacity.

Electrical : 24-volt starter and lighting equipment.

Seating Capacity : 34.

Dimensions : Overall length 29' 9 $\frac{5}{8}$ ", overall width 8' 0". Wheel base 16' 4".
Front overhang 5' 11 $\frac{1}{8}$ ". Rear overhang 7' 6 $\frac{1}{2}$ ".

Windows : Twelve side windows above which are hopper type ventilators.
Lantern type windscreen.

Heating : Three recirculatory units. Demisters fitted to front screens.

Ventilation : Fan assisted ventilation is fitted in the front bulkhead together
with an extractor fan in the rear canopy.

Unladen Weight : 6 tons 13 cwt. 1 qr.

The Company believes that this new service will be attractive to passengers
between the two cities who prefer to travel by road.

It hopes that you will find this inaugural journey an interesting and
enjoyable experience.



When the M1 motorway was first opened there was no speed limit and Midland Red were keen to ensure a high speed performance from its specially designed coach. The C5 standard coach, with its existing gearbox and rear axle, gave a top speed of 48 mph from the 98 bhp engine output. The company's engineers came to the conclusion that they would need something in excess of 130 bhp together with an increase in engine maximum revs to meet the proposed requirement of 80 mph.

This was achieved by the use of a turbocharger but this was not simply to attain a high maximum speed, but also to secure good acceleration and to manage the motorway's 1 in 30 gradients at a reasonable speed. By the time the motorway service began good acceleration was achieved with 70 mph being reached in 70 seconds, fully laden!

Facebook “Flood”

During April and May, as much of the population was confined to home and our centres were closed, we kept interest high by posting a photograph each day on Facebook. The images were drawn from collections where we hold copyright – largely Roy Marshall, Peter Henson and Robin Hannay, and reflected different operator types from all traffic areas.

Here, we repeat the top twelve (plus the most popular one on the front cover) across operator types.



Lincolnshire Bristol LS6G/ECW 2001 (JFU 290) had started life as a full coach in 1953 before being switched to bus work as seen here in this late 1960s view by Robin Hannay (ref RH2639). Sold in 1971, it enjoyed something of an Indian summer by being operated by Asian Greyhound of Guildford...



OKM 317 is an AEC Regent III (with 9.6 litre engine and pre-select gearbox) with Saunders bodywork, built as a demonstrator for its body manufacturer in 1949 but not registered until used by Maidstone & District in 1952. Ownership passed from Saunders to Law of Prestwick in 1952, then quickly to Dodds of Troon a year later with a share of the Law's business. Despite its nomadic start to life it then operated with Dodds for 25 years, being withdrawn in 1979 and is preserved by them. It is seen in the company of a rather less happy Alexander bodied Daimler Fleetline. Photographer: Robin Hannay.



From the days when local bus provision in the City of York was largely the preserve of York-West Yorkshire, operated as part of West Yorkshire Road Car from its York depot in Barbican Road but with a part-interest by York City Council. This 1966 Bristol Lodekka is a late example of the rear loading FS model with Bristol engine and of course ECW body. It did 13 years in service before being dispatched to a dealer and then to scrap in 1980. It is seen here travelling through the City Walls at Station Road. Photographer Peter Henson.



West Hartlepool was an early proponent of pay-as-you-enter operation of town services in 1964; they were also one of the first to buy ECW products when they were available on the open market. Here is a brand new 34/EEF 34D a Leyland Leopard L1 seen in the bus park behind Church Street in 1966, with a Roe-bodied Leyland PD2. Photographer Peter Henson.



Before the mass influx of New Bus Grant coaches into Barton Transport in the 1970s, it had a very varied fleet. Having said that, here are two AEC Reliances - but with differing pedigrees. 135 BMV (fleet number 751) was new as an AEC demonstrator in 1954 and passed to a company in Aldershot for a year before entering the Barton fleet in 1955. Its Duple centre-entrance body was converted to front entrance in 1961 and the coach was sold on for further service in 1972. BVO 5C (fleet number 1005) was new to Barton in 1965 and saw ten years' service before passing via a dealer to Parkin of Burton and then to Bridgwater Sea Cadets by 1982. Photographer Robin Hannay.



Here's something out of the ordinary, from the days when The Birmingham & Midland Motor Omnibus Company (Midland Red) built its own buses - and many for other companies. AHA 608 is an LRR model with Short 30-seat coach body, new in 1935. It was converted to 34 bus seats in 1941 and withdrawn in 1952. So quite a long and arduous life for a handsome vehicle. Photographer John Cull.



This very characterful Crossley DD42/8 with Crossley lowbridge body was new in 1950 to Reading Corporation Transport as its fleet number 90/ERD 159. This batch of buses (84-95: ERD 153-64) was the first batch for the operator to the new maximum width of eight feet and were the first Reading motorbuses with platform doors controlled by the driver. It served Reading well, putting in sixteen years service before passing to a succession of dealers in 1967 and scrapped. Photographer Robin Hannay.



Another cracker from the camera of Charles Klapper is this MacBraynes Thornycroft HF/ER4. Its Harkness 14 seat body had a separate mail compartment in the rear - a feature on so many vehicles of that fleet. It was supplied as a complete vehicle by Harkness of Belfast and registered at the start of 1948 as FGD 4 (fleet number 76). It was sold in 1959 to become a mobile shop in Glasgow and was last licensed in 1967.

Many of the photos featured here - and thousands more - are available for sale through our sister organisation The Omnibus Society at two websites:
<https://theomnibussociety.zenfolio.com>
<https://thetransportlibrary.co.uk>



Leicester displayed an early interest in the Park & Ride concept, before being eclipsed by Oxford in the early 1970s. Here we see fleet number 4 (LJF 4F) a 1967 Bristol RESL with dual-door ECW body operating "Route A". Note the contemporary fashions, bus stop and - oh yes - a "Bundy" clock indicating a timing point. The bus passed to Blackburn Borough Council in 1978 and eventually came to rest in the fleet of well-known operator Phillips of Shiptonthorpe in 1983. Photographer Robin Hannay.



This Park Royal bodied AEC Bridgemaster is seen wearing the simplified version of the traditional, fondly remembered City of Oxford livery. This version was introduced in the early National Bus Company years before NBC Corporate Livery took hold. 309/309 MFC was new in 1961, withdrawn in 1973 and saw subsequent service with Goldsmith, Sicklemere before being scrapped in 1979. The location is Carfax, with the bus emerging from Queen Street and about to move ahead into The High. Photographer Peter Henson.



Walsall Corporation is a particular favourite of ours - and not just because it is the "home town" of one of our research centres. Under General Manager R Edgley Cox it ran perhaps the most varied and idiosyncratic of all municipal fleets. You may have seen our feature in Classic Bus about his ideas to rebody Leyland Royal Tigers as double decks(!) Here is fleet number 28/BDH 428C, a Northern Counties bodied Daimler Fleetline built with a shortened front overhang and entrance behind the front axle. All Walsall Fleetlines up to early 1965 were to this configuration and 27 feet 6in length. From late 1965 the standard was the same body and chassis combination but to a more normal layout and length (with the exception of an 86 seat, 36 feet long version in 1968!). This bus passed to West Midlands PTE on its formation in 1969 and was rebuilt with a middle exit door in 1972. Photographer Robin Hannay.



And finally.... A tale of two Commers, and one body. Here is a Commer Q4 of Tantivy, St Helier in Jersey, with a Waveney 18 seat body. The driver is blowing his nose, oblivious to the fact that this action is being captured by Robin Hannay for posterity! The body was built at an unknown (prewar) date as a mobile chapel for the island on a Commer B30 Raider chassis, then rebuilt as a bus by AA Pitcher Ltd. It was acquired by Tantivy in 1947 and withdrawn two years later due to an accident. The body was rebuilt as an 18 seater and transferred to the new Commer Q4 chassis here in 1949. It was withdrawn in 1970 and preserved locally, but we understand it was subsequently scrapped. In all its incarnations, the vehicle carried the registration number J 5254 and the company fleet number 8.

To keep up with developments at The Bus Archive, go to our Facebook page @TheBusArchive or www.facebook.com/busarchive.

Traffic Areas

One of our regular researchers has been looking at the volumes we hold of the Report of the Royal Commission on Transport produced in 1929, which led directly to the Road Traffic Act of the following year.



The Commission's work was clearly very detailed and included drawing up the suggested boundaries of the individual Traffic Areas, each to be controlled by a panel of Traffic Commissioners.

The suggested areas for England and Wales seem to have been carried through directly, but it is interesting that four Areas were suggested for Scotland, when only two were actually introduced (North and South). We wonder what happened in the meantime?

Digitisation

During the health emergency, we have not been able to access our Centres for anything other than regular security checks, as recommended by The National Archives.

Some of our volunteers, however, have been working from home on two major projects.

The first is to catalogue some of our collection of images – with over 1.5 million of them there is enough to keep us going for some time! We have recently had scanned the Peter Taplin collection and our volunteer team are now cataloguing these, all to a standard format.

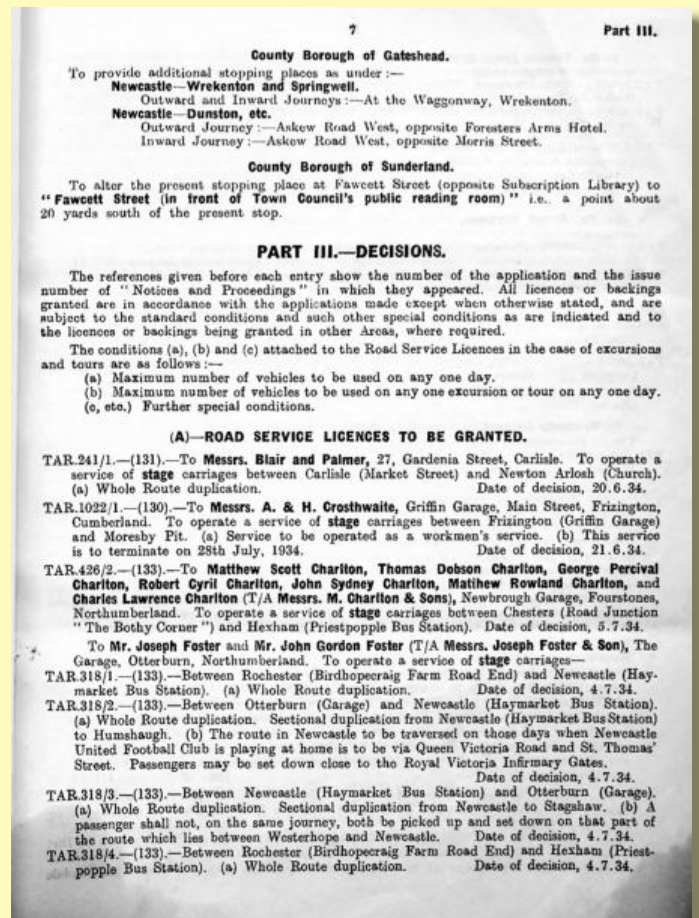
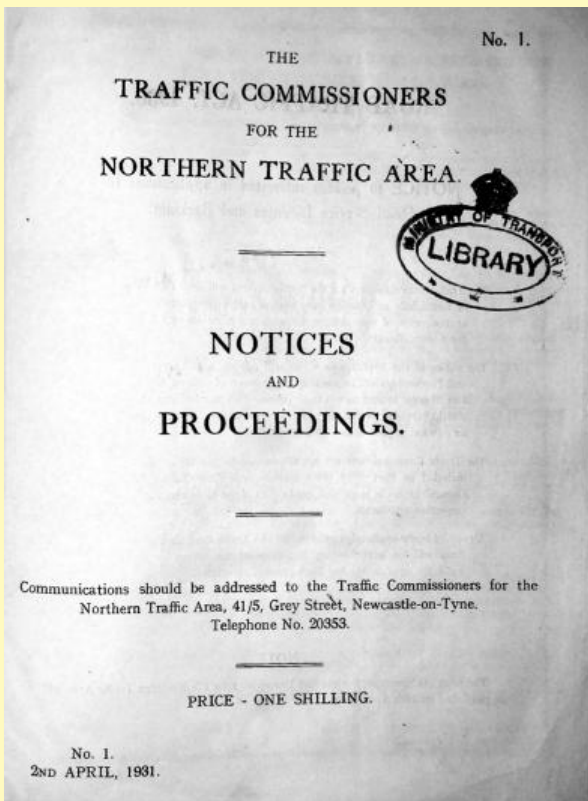


One of the many Taplin images being catalogued: a late Leyland Tiger Cub with Rhondda.



The other project is one we have had in gestation for some time – the digitisation of Notices & Proceedings, the publication issued since 1931 by the Traffic Commissioners for each Traffic Area, detailing applications to introduce, change or withdraw services and even (until 1980) to change fares. Eventually, we hope to have these available via our website for researchers to access.

We have been able to acquire two overhead scanners for a very reasonable price – only a year ago this technology would have cost thousands - and we have had three people working on this during the lockdown. But it will be a very long haul: we estimate that there were nearly 22,000 editions across all areas issued until N&P was itself issued in digital format in the early 2000s.



More details when we are further down this long road!

Have you been having a “sort-out”? - Donating your Collection to The Bus Archive

We receive regular enquiries from individuals thinking of donating their collections to The Bus Archive, either during their lifetime or in their wills. The recent lockdown is prompting many people to “sort out” their collections – so is the Bus Archive interested?

The immediate answer is “yes please!” as these donations allows us to maintain our work and add to our own collections, for the benefit of others.

Any enthusiast collection will include a number of different elements, and of course each one will have a slightly different focus depending on the enthusiast’s own interests. However, in general terms a collection is likely to have some of these elements:

- **Books, magazines etc.**
- **Timetables and publicity**
- **Original documents from operators, manufacturers etc.**
- **Photographs**
- **Tickets**
- **Research by the enthusiast him/herself**

We are interested in receiving all of these.

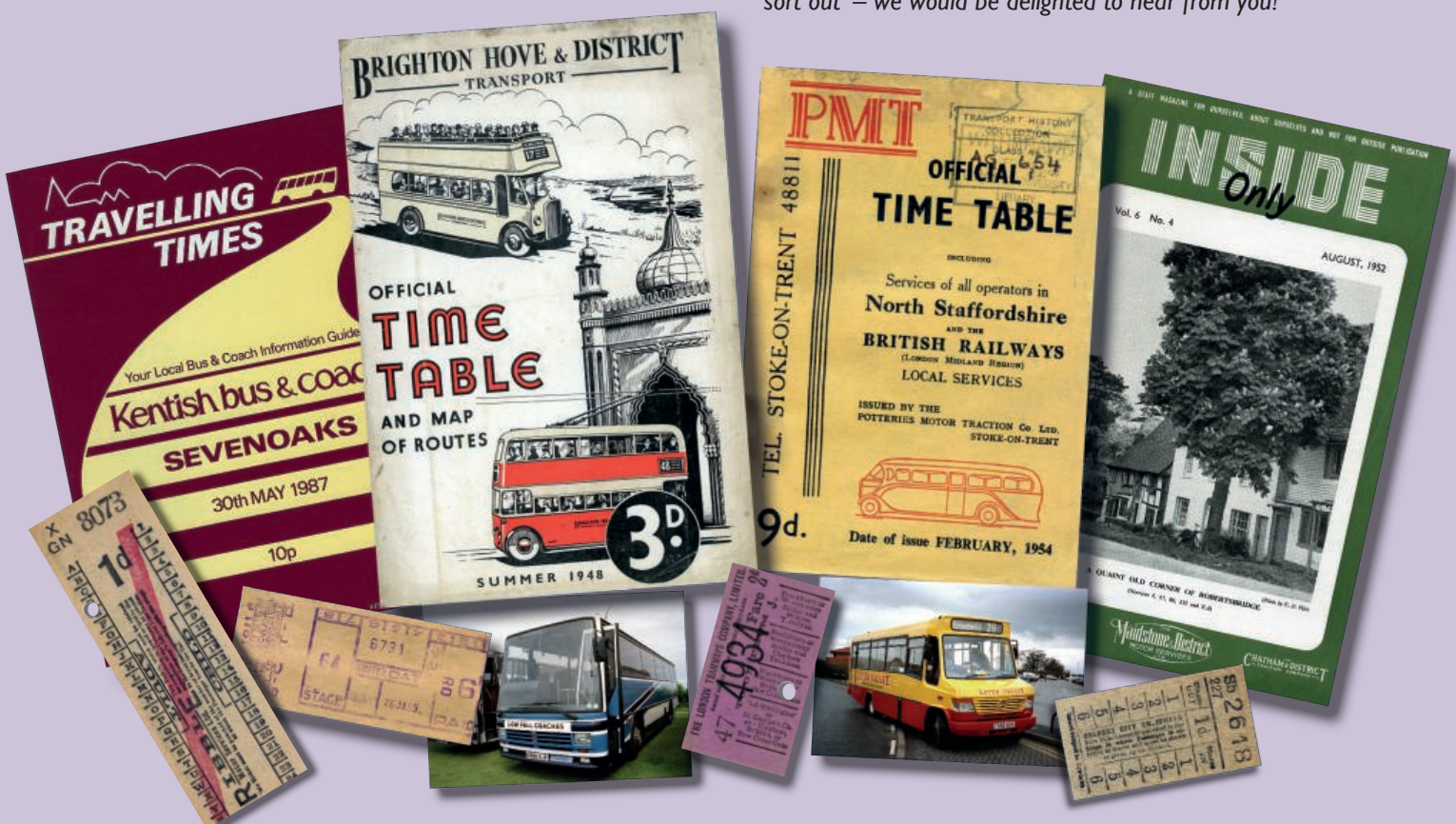
The original documents, photographs and research will be added to our collections, appropriately catalogued and so easily accessed by everyone. If making a will, please include a sentence which transfers copyright on these items to us.

Books, magazines, tickets and timetables are widely published and so we deal with these differently. If we don’t have a particular item in our collections, then we will add it. But if we do, then we can either return this to you (or your family) or sell it to the financial benefit of our charity. In almost all cases, donors allow us to sell these surplus items which brings in money to help with the functioning of our centres. Due to our charitable status we cannot sell items on your behalf.

Increasingly enthusiasts are building collections of photographs and other material in digital form. If you have such items and want to pass these on, please ensure your relatives or legal representatives are aware of their existence, including passwords etc., as it is often the case that computer records are very quickly erased.

We do not generally collect three-dimensional objects and so we do not have a comprehensive collection of model buses, badges etc. You may wish to deal with these separately or donate these to us and we will either find an appropriate repository for them (e.g. a museum) or sell them for the financial benefit of our charity.

Like many people, during the lockdown you may have had ‘a good sort out’ – we would be delighted to hear from you!



Supporting The Bus Archive

It is one of the founding principles of The Bus Archive that everything we do can be accessed free of charge – if you want to come and conduct research there is no compulsory fee, our Facebook content is obviously free and even this newsletter is provided free of charge. There is no membership requirement to enjoy what The Bus Archive has to offer.

But of course there is a cost to everything. Our centres are charged for maintenance, insurance and utilities, we need to buy conservation grade folders and boxes to ensure the long-term future of our collections, and of course we need to hire transport to collect donated material.

We raise funds in a number of ways: we run the BusMart scheme, selling on our surplus items (more of this in the next edition) and we try to encourage researchers to make a small contribution when they visit.

But there are two ways that individuals can make a real difference to our work with direct financial support:

1. By becoming a **Friend of The Bus Archive** and making a regular payment (either monthly or annually) or an equivalent lump sum. As a Friend, you will receive priority notice of items available through BusMart.

If you are interested in becoming a Friend, a form is included with this edition of Bus Archive News. Or you can also contact us direct, through the usual phone number or email or postal addresses to discuss this.

2. By **remembering us in your will**. You will probably draw up your will with your own solicitor, who will advise on wording but our suggestion is: "I leave [amount and/or details of bequest] to The Bus Archive (registered charity number 1177343) of 100-102 Sandwell Street, Walsall, WS1 3EB, for its general charitable purpose. I direct that a receipt from the treasurer or duly authorised officer shall be a valid and appropriate discharge".

Of course, we all want everyone to lead long and full lives, but it is as well that important matters such as this are considered and properly dealt with.

All contributions are of course voluntary - there will be absolutely no change to the free provision of Bus Archive News or access to our services if you don't become a Friend. But if you think we are doing valuable work, you may wish to support us.

How to Explore Our Collections

Our catalogue is available online at www.busarchive.org.uk

Why not use some time to look up what we hold on your favourite operators and manufacturers? You can then look at them in person at our centres when the health emergency is over.



This newsletter is published by The Bus Archive, 100-102 Sandwell Street, Walsall, WS1 3EB. Registered as a charity in England and Wales (number 1177343), set up as a Charitable Incorporated Organisation.

Newsletter editor: Philip Kirk
Newsletter design and layout: Mike Greenwood

www.busarchive.org.uk
hello@busarchive.org.uk